

Surface Water on the Influence of the Carajás Mineral Province (Brazil) – Consequences to an Indigenous Community

H. Correa, I.M.H.R. Antunes, A.P.M. Reis

ICT, University of Minho, Campus de Gualtar, 4710 - 057 Braga, Portugal,
helenamedleg@hotmail.com, imantunes@dct.uminho.pt, pmarinho@dct.uminho.pt

Abstract

The Cateté River belongs to the Itacaiúnas River watershed, including the most prominent mining area of Brazil with active mines of Fe, Cu, Ni, and Mn. This river has a high vulnerability associated with the drainage of mining effluents and crosses the “Xikrin-Cateté Indigenous Land”.

Most water samples from Cateté river are neutral and poorly mineralized, but with high concentrations of Fe, Mn, Ni, Cu, Cr, Zn, and Pb. Some waters are contaminated and unsuitable for human consumption and agricultural activities. The water contamination is mainly associated with mine activities; however, Fe is also related to geological setting and lithologies.

Keywords: Potentially Toxic Elements, Mines, Itacaiúnas River, Contamination, Indigenous Communities

Introduction

The global concern is to ensure sufficiency in water quantity for public health, food security, and water access demand (UNESCO, 2019). Brazil contains the largest volume of freshwater of any nation in the world, with extensive rivers and containing about 12% of the availability of fresh water in planet (ANA, 2020). However, this natural resource is becoming scarce because of increased consumption, extended droughts, precarious distribution, inadequate treatment infrastructures, and water quality degradation, mainly associated to anthropogenic pressures (Val *et al.*, 2019; Mello *et al.*, 2020). Water resources are threatened not only by climate change scenarios but also by increasing levels of pollution, which has become a serious environmental problem on a global scale (Satapathy *et al.*, 2009).

The diversity of geological environments gives Brazil one of the biggest mineral potential (Santana *et al.*, 2020) and the second-largest producer of mineral ores in the world (National Minerals Information Center/US Geological Survey, 2017), with important reserves of iron, manganese, niobium, and nickel. Several Brazilian states, particularly Minas Gerais and Pará, are

economically dependent on mining activities (Reis and Silva, 2015; Milanez *et al.*, 2019). Mining activities, although relevant and indispensable for human socioeconomic development, accelerates natural processes and increases the likelihood of releasing toxic elements at higher rates in adjacent areas (Satapathy *et al.*, 2009; Paraguassú *et al.*, 2019; Alves *et al.*, 2020). Mining regions constitute an important challenge in the management of water resources since its impacts could be an environmental risk and human health concern.

The generation of large amounts of solid waste and effluents, derived from mining activities, represents a potential source of contamination since potentially toxic elements (PTE) can be dispersed by the action of natural factors or accidentally leading to water by mine drainage (e.g., Lottermoser, 2007; Kipp *et al.* 2009; García-Lorenzo *et al.*, 2012; Antunes *et al.*, 2018).

Growing global concern about the protection of water quality has led to increasing attention to monitoring and risk assessment of PTE in water bodies (Sahoo *et al.* 2019). The main subject of this research is the evaluation of the water quality of the Cateté River, located in the south-eastern

region of the State of Pará - northern region of Brazil, and extensively used by an indigenous community.

Study area

The Itacaiúnas River watershed (05°10’ to 07°15’S latitude, 48°37’ to 51°25’ longitude) is located in the Brazilian Amazonia, Carajás region, Pará State, Northern Brazil (Fig. 1). Amazonia contains most of the country’s surface water (ANA, 2019). The population of Itacaiúnas River watershed is approx. 700,000 persons in an area of approx. 41,500 km².

Geologically, the area is in the southern portion of the Amazonian Craton, southwest region of the Carajás Mineral Province, one of the most important metallogenic provinces in the world, containing world-class Fe (iron) and Cu (copper) mines, as well as Mn (manganes) and Ni (níquel) ones (Vasquez *et al.*, 2008; Sahoo *et al.*, 2019). The Mineral Province of Carajás is divided into two geological domains: Carajás, specifically where the Xikrin TI of the Cateté River is located and Rio Maria domain (Vasquez *et al.*, 2008).

Two of the main tributaries of Itacaiúnas River are the Cateté (western side) and

Parauapebas (eastern side). The Cateté River has an extension of about 168.3 km and crosses the “Xikrin-Cateté Indigenous Land (XIL)” (Fig. 1). The Cateté and Itacaiúnas rivers supply the Indigenous Land, and water is considered by the indigenous community as a cultural and human belongs. However, the Cateté River has a high vulnerability associated with the drainage of effluents from mining activities and water contamination will promote a severe influence on the culture, leisure, and health problems of the indigenous community.

The XIL of the Cateté River corresponds to a national reserve area, which is traditionally occupied by indigenous communities, in an extension up to 438,000 ha, with a perimeter of approximately 360 km and a population of 1183 inhabitants, called “Caiapó-Xikrin population” (ISA, 2020). This reserve’s territory is surrounded by agricultural activities and a contrasting between pasture vegetation and dense forest, with an abundance of species, especially chestnut (Costa, 2019). Rivers are the main determining factor on the human occupation and on the practice of indigenous culture, such as the natural human bathing, fishing activities and water management

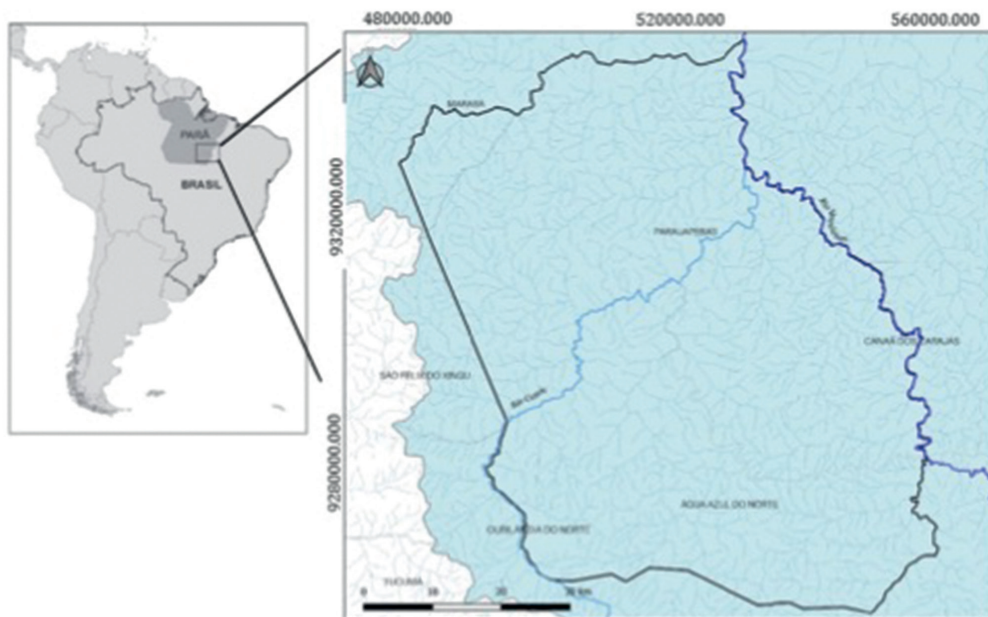


Figure 1 Geographic setting of study area and delimitation of Xikrin-Cateté Indigenous Land area crossed by Cateté river.

on indigenous food local production (e.g., manioc), as well as, on recreational activities (Corrêa, 2021). The indigenous community has been suffering severe impacts on cultural activities and health, because of the contamination of the water river.

Methods

A total of fourteen water samples were collected on the Cateté River around the area of Xikrin indigenous village (Fig. 2). The sampling water points were selected to characterize the water from Cateté River upstream and downstream the influence of mine drainage. The two villages - Cateté and Djudjekô - are located on the main influence of Cateté River and the river ports are represented by water samples PT06 and PT07, respectively (Fig. 2).

The physico-chemical properties - colour, turbidity, pH, Total Dissolved Solids (TDS), Biological Oxygen Demand (CBO5) and Dissolved Oxygen (DO) - and selected PTE - Copper, Chromium, Iron, Manganese, Nickel, Zinc, Lead, Mercury, and Aluminium from water were determined. To obtain a space-time water characterization, the water sampling was obtained twice in a year, to represent the raining season (January) and the wet season (June). The water parameters were determined in a certified laboratory, the Multi-Analysis Laboratory (Belém do Pará, Brazil) and according to Brazilian water frameworks

and Standard Methods for the Examination of Water and Wastewater (CONAMA, 2005; Carvalho, 2015).

Results

Most water samples have pH values ranging from 6.0 to 8.0, are moderately oxygenated (Dissolved Oxygen = 5.4–10.4 mg/L) and poorly mineralized (TDS = 18–72 mg/L). The waters are slightly alkaline and are classified as mixed Ca-Na-HCO₃- type, indicating that they are mainly influenced by silicate rock weathering (Sahoo *et al.*, 2019). The variation of pH values from the water will be able to promote the increase in PTE contents absorbed into particulate matter (sediments). The relation between TDS and major ions suggest that rock weathering is the dominant process controlling water composition (Sahoo *et al.*, 2019).

Almost major ions and TDS water contents from Cateté river are higher in the rainy season than in the dry season like as been found in other surface waters from the Itacaiúnas River watershed (Sahoo *et al.*, 2019). The water of the Cateté River shows high concentrations of chemical elements, such as Cr (up to 0.09 mg/L), Fe (up to 13.3 mg/L), Mn (up to 1.78 mg/L), Ni (up to 0.04 mg/L), Zn (up to 0.5 mg/L), Cu (up to 0.13 mg/L), Al (up to 0.39 mg/L) and Pb (up to 0.05 mg/L).

In general, in the rainy period, there are higher Cr, Mn, Ni, Zn and Cu than in the dried period (Fig. 3), which could be associated to the increase of surface water flow and the mobility of these elements from sediments to water. Otherwise, Fe water contents tend to have higher values in the dry season probably due to a concentration effect. The Fe concentration in the water from Itacaiúnas river watershed and its tributaries, such as the Cateté river, is mainly associated to the natural geology of the area (Salomão *et al.*, 2020). However, the highest Fe content on the Cateté river water were found downstream the influence of mining activities (sample points PT08 and PT09; Fig. 3). So, the presence of Fe in the waters of the Cateté River is related with the geological setting and local lithology but is also influenced by the mining activities.

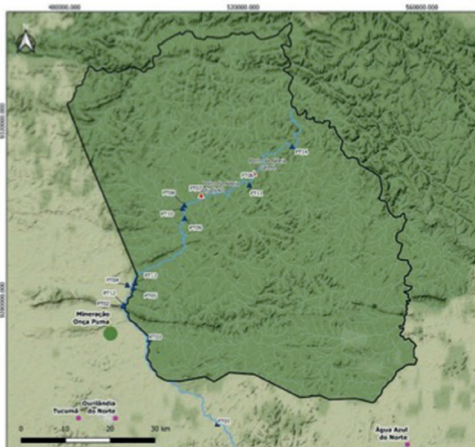


Figure 2 Xikrin-Cateté Indigenous Land area and location of Cateté river sampling points (▲ - water sampling point; ▲ - river ports; ● - mine area).

Some water points are contaminated with Fe, Mn, Ni, Cu, Cr, and Zn, and unsuitable for human consumption and agricultural activities (Fig. 3), according to CONAMA (2005). The water contamination of the Cateté river is mainly associated with mine activities developed in the area.

Conclusions

The Itacaiúnas river basin is located in one of the most important mining areas in Brazil, which includes mining activities with the exploration of lateritic nickel deposits. The Cateté River belongs to the Itacaiúnas River basin and has been the main receptor of effluents from these mining activities. These rivers supply the villages of the Indigenous Land, crossing the Xikrin Indigenous Community of the Cateté River. Rivers are determining factors in the positioning of indigenous communities, and their culture is heavily dependent on water, from daily activities that include the practice of fishing and the production of food products, as well as their use in recreational and fun activities.

The results of this study provided valuable information on PTE contamination in water resources located in an area from Itacaiúnas watershed occupied by an indigenous community. The characterization of surface water from Cateté river indicate that Fe, Mn, Ni, Cu, Cr, and Zn are potential contaminants, and

exhibited higher concentrations that the reference values established by Brazilian national frameworks.

Although Fe and Ni mines are active in the region, high enrichment of Fe and Mn is not only related to mining, but rather to geological conditions inherent to the Amazonian region, that were reinforced by land use changes (Salomão *et al.*, 2018). Very high concentration of Fe and Mn is the common geochemical signature of surface water in the Itacaiúnas river watershed (Sahoo *et al.*, 2019). The occurrence and spatial distribution of PTE reflect different local geological and antropogenic factors active in the Itacaiúnas river watershed (Sahoo *et al.*, 2019). The main contamination source in the region is associated to mining activities, but also to natural geological background.

The obtained results in surface water reinforce the evidence of environmental and human health risks associated with mine activities and the relevant application of adequate preventive and monitoring methodologies. The mining sector has produced water quality degradation and environmental disasters in recent years. Enforcement of environmental laws, inspection and control from environmental agencies, application of measures and pressure from society are strongly needed to avoid water quality contamination from mining and continued disasters.

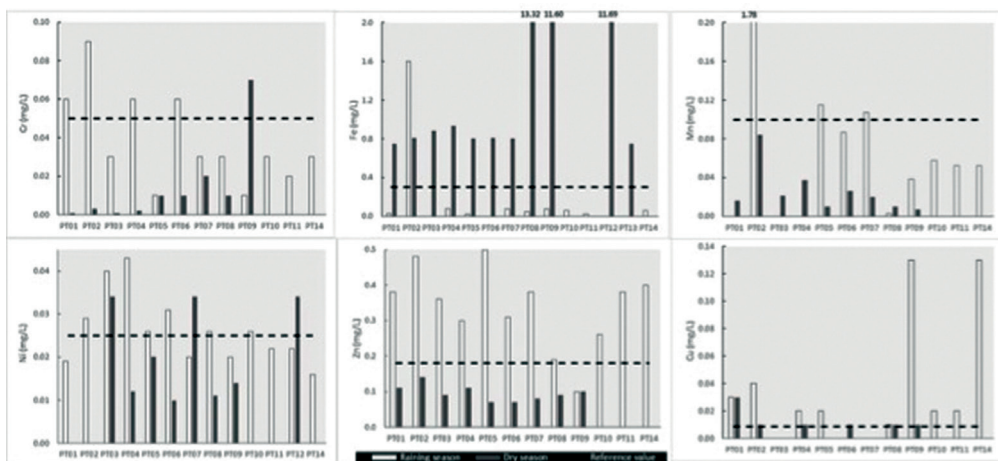


Figure 3 Seasonal chemical variation in waters from the Cateté river. Reference value (CONAMA, 2005).

This study will be a useful tool for the authorities responsible for environmental management, especially when assessing the impact of economic activities, such as mining and agriculture, on water resources in this climate region. Further studies that continue to monitor and assess the level of contamination of water resources in the watershed are crucial to preserving access to safe freshwater sources. The main motivation for this study comes for the recognition of the importance of the mining sector in Brazil and the significant environmental, social, and economic impacts attributed to the mining extraction processes. To the future is necessary more specific frameworks and tools for sustainability performance evaluation especially suited to the mining sector.

Acknowledgements

The authors acknowledge to Eran Paulo Rodrigues and Prof. Reginaldo Sabóia de Paiva from GTEMA/CNPQ/UFPA (Brazil) for the information and data provided and to FCT – Fundação para a Ciência e a Tecnologia, I.P., through the project's reference UIDB/04683/2020, UIDP/04683/2020.

References

- Alves W, Ferreira P, Araújo M (2020) Challenges and pathways for Brazilian mining sustainability. *Res Pol.* <https://doi.org/10.1016/j.resourpol.2020.101648>
- ANA (2019) Qualidade de rios em nove estados está ruim ou regular, aponta estudo. Acessível em <https://www.ana.gov.br/noticias-antigas/qualidade-de-rios-em-nove-estados-esta-ruim-ou.2019-03-15.6696430832> [accessed on the 20th April 2021].
- ANA (2020) Enquadramento – Bases Conceituais. Acessível em <http://pnqa.ana.gov.br/enquadramento-bases-conceituais.aspx> [accessed on the 20th April 2021].
- Antunes IMHR, Neiva AMR, Albuquerque MTD, Carvalho PCS, Santos ACT, Cunha PP (2018) Potential toxic elements in stream sediments, soils and waters in an abandoned radium mine (central Portugal). *Environ Geochem Health* 40(1):521-542, doi:10.1007/s10653-017-9945-2
- Carvalho CGP de (2015) Análise da acumulação de metais pesados oriundos de atividades de mineração na terra indígena Kikrin Cateté. Trabalho de Conclusão de Curso de Graduação em Engenharia de Minas e Meio Ambiente. Universidade Federal do Pará (UFPA). 49 pp.
- CONAMA – Ministério do Meio Ambiente (2005) Resolução nº 357, de 17 de março de 2005. Disponível em <https://www.mma.gov.br/port/conama/res/res05/res35705.pdf>
- Corrêa HS (2021) Avaliação da Qualidade da Água na Influência de Atividades Mineiras e seus Efeitos na Comunidade Indígena dos Xikrins do Rio Cateté (Pará, Brasil). Unpublished Ms Thesis em Ciências e Tecnologias do Ambiente, Universidade do Minho (Braga, Portugal), 97 pp.
- Costa RNL (2019) BAKRUKREN: o difícil exercício de soberania alimentar pelos Xikrin do Cateté, da aldeia DJu-djekô, no município de Parauapebas, Pará. Dissertação de Mestrado em Dinâmicas Territoriais e Sociedade na Amazônia, Universidade Federal do Sul e Sudeste do Pará. Marabá – Pará – Brasil.
- García-Lorenzo ML, Pérez-Sirvent C, Martínez-Sánchez MJ, Molina-Ruiz J (2012) Trace elements contamination in an abandoned mining site in a semi-arid zone. *J Geochem Explor* 113: 23-35. <https://doi.org/10.1016/j.gexplo.2011.07.001>
- ISA (2020) Terra Indígena Xikrin do Cateté. <https://terrasindigenas.org.br/pt-br/terras-indigenas/3646> [accessed on the 21st July 2020].
- Kipp GG, Stone JJ, Stetler LD (2009) Arsenic and uranium transport in sediments near abandoned uranium mines in Harding County, South Dakota. *Appl Geochem* 24(12):2246-2255, doi: 10.1016/j.apgeochem.2009.09.017
- Lottermoser BG (2007) *Mine Wastes Characterization, Treatment, Environmental Impacts*. Springer, Berlin. 2ed.
- Mello K, Taniwaki RH, Paula FR, Valente RA, Randhir TO, Macedo DR, Leal CG, Rodrigues CB, Hughes RM (2020) Multiscale land use impacts on water quality: Assessment, planning, and future perspectives in Brazil. *J Environ Man* 270: 110879. <https://doi.org/10.1016/j.jenvman.2020.110879>
- Milanez B, Magno L, Pinto RG (2019) Da política fraca à política privada: o papel do setor mineral nas mudanças da política ambiental em Minas Gerais. Brasil. *Cad Saú Publ* 35: e00051219. <https://dx.doi.org/10.1590/0102-311X00051219>.
- National Minerals Information Center/US Geological Survey (2017) Global iron-ore production data: clarification of reporting from the USGS. *Min Eng* 69: 20-23.

- Paraguassú L, Leite MGP, Moreira FWA, Mendonça FPC, Eskinazi-Sant’Anna EM (2019) Impacts of mining in artificial lake of Iron Quadrangle-MG: past marks and changes of the present. *Environm Ear Sci* 167(78): 1-10. <https://doi.org/10.1007/s12665-019-8158-7>.
- Reis JC, Silva H (2015) Mineração e desenvolvimento em Minas Gerais na década 2000-2010. *Novos Cad NAEA* 18: 73-100.
- Sahoo PK, Dall’Agnol R, Salomão GN, Junior JSF, Silva MS, Souza Filho PWM, Powell MA, Angélica RS, Pontes PR, Costa ME, Sequeira JO (2019). High resolution hydrogeochemical survey and estimation of baseline concentrations of trace elements in surface water of the Itacaiúnas River Basin, southeastern Amazonia: implication for environmental studies. *J Geochem Explor* 205: 106321.
- Salomão GN, Agnol RD, Sahoo PK, Júnior JSF, Silva MS, Souza Filho PW, Júnior WRN, Costa MF (2018) Geochemical distribution and thresholds values determination of heavy metals in stream water in the sub-basins of Vermelho and Sororó rivers, Itacaiúnas River watershed, Eastern Amazon, Brazil. *Geochim Bras* 32: 179-197.
- Salomão GN, Agnol RD, Sahoo PK, Angélica RS, Medeiros Filho CA, Ferreira Júnior JS, Silva MS, Souza Filho PWM, Nascimento Júnior WR, Costa ME, Guilherme LRG, Siqueira JO (2020) Geochemical mapping in stream sediments of the Carajás Mineral Province: Background values for the Itacaiúnas River watershed, Brazil. *App Geochem* 118.
- Santana CS, Olivares DMM, Silva VHC, Luzardo FHM, Velasco FG, Jesus RM (2020). Assessment of water resources pollution associated with mining activity in a semi-arid region. *J Environ Manag* 273: 111148
- Satapathy DR, Salve PR, Kapatal YB (2009) Spatial distribution of metals in ground/surface waters in the Chandrapur district (Central India) and their plausible sources. *Environ Geol* 56: 1323-135. <https://doi.org/10.1007/s00254-008-1230-3>
- UNESCO (2019) The United Nations World Water Development Report 2019: Leaving No One behind. UNESCO, Paris. Available in: <https://www.unwater.org/publication/world-water-development-report-2019/>
- Val AL, Bicudo EM, Bicudo DC, Pujoni DGF, Spilki FR, Nogueira IS, Hespanhol I, Cirilo JÁ, Tundisi JG, Val P, Hirata R, Feliciano SM, Azevedo SMFO, Crestana S, Ciminelli VST (2019) Water quality in Brazil. *Water Quality in the Americas: Risk and opportunities*. IANAS-IAP, Mexico City.
- Vasquez ML, Rosa-Costa LT, Silva CG, Ricci PF, Barbosa JO, Klein EL, Lopes ES, Macambira EB, Chaves CL, Carvalho JM, Oliveira JG, Anjos GC, Silva HR (2008) *Geologia e Recursos Minerais do Estado do Pará: Sistema de Informações Geográficas – SIG: texto explicativo dos mapas Geológico e Tectônico e de Recursos Minerais do Estado do Pará*. Escala 1:1.000.000. Belém: CPRM, 328pp.